

4 Ports PoE Ethernet Switch

6kV Lightning Protection, Support PoE Management, 802.3af/at



- **Main Ports:** 4x downlink Fast PoE Ethernet ports, 2x uplink Fast Ethernet ports;
- **Unique Feature:** one-key CCTV mode, which can restrain network storm, realize VLAN function and 1-4 downlink ports only able to communicate with uplink ports; the further transmission distance up to 250m in CCTV mode with 10 Mbps bitrate
- **Power Input:** DC 48V~57V;
- **Standard:** IEEE802.3, IEEE802.3u, IEEE802.3 af, IEEE802.3at;
- **Protection:** Superior lightning protection (6kV), ESD protection and anti-interference ability;
- **Structure:** stable and delicate, easy to install;
- **Operation:** plug and play, no any settings needed.

Introduction

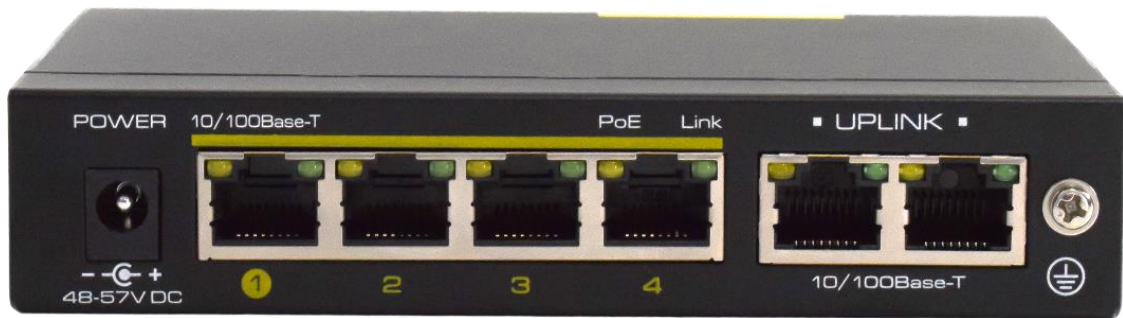
The 4 ports PoE Ethernet Switch is a security surveillance Ethernet Switch which aims at Ethernet high definition surveillance and security system. The product fully combines the characteristics of security surveillance, provides fast packet forwarding ability and abundant backplane bandwidth, which ensures clear image and fluent transmission. ESD and surge protection circuit can improve product stability. The product supports one key CCTV model, with VLAN function can restrain the network storm, protect the information security, prevent the viral transmission and cyber attack, fully satisfy the Ethernet video security surveillance system and Ethernet project needs.

Specification

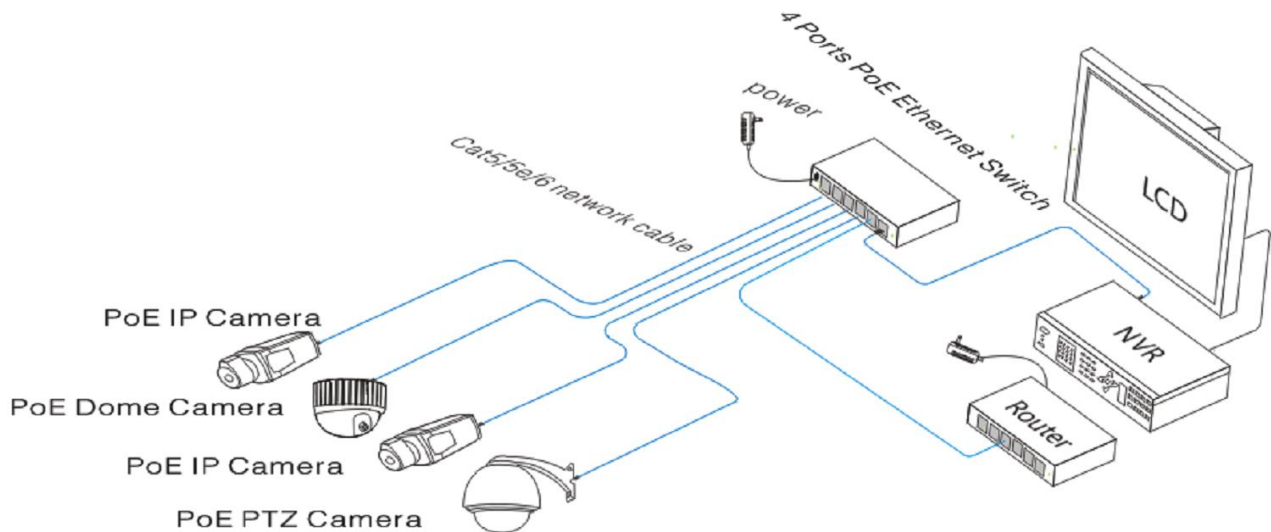
Model	S1004-60
Downstream Ports	4 * 10/100Base-TX (PoE)
Uplink Ports	2 * 10/100
Network Standard	IEEE802.3, IEEE802.3u, IEEE802.3ab, IEEE802.3z, IEEE802.3X
Switch Capacity	1.25Gbps
Packet Forwarding Rate	0.88Mpps
Switch Processing Scheme	Store and Forward
Packet Buffer	768k
MAC Table	2K
PoE Standard	802.3af / at (PSE)
PSE Type	End-span
Power Pin Assignment	1/2(+), 3/6(-)
PoE Power Output	54V DC, 30 watts max
PoE Budge	60 watts max
Lightning protection	6kV Execute: IEC61000-4-5
ESD	6kV Contact discharge 8kV Air discharge Execute: IEC61000-4-2
Power Supply	48-57 V DC
Power Dissipation	< 5W (Including PoE)
Work temperature	-10 °C ~ 50 °C
Storage temperature	-40 °C ~ 85 °C
Humidity(Non-condensing)	5% - 95%
Dimension (L×W×H)	135 mm x 86 mm x 27 mm
Weight	343 g
Regulator	CE, FCC, ROHS

Designation	Quantity
S1004-60	1
Power Adapter	1
Accessory	1
User Manual	1

Port configuration



Typical application



Para más información sobre Cygnus Electronics visite: www.cygnus.la – Cygnus electronics y su respectivo logo son marcas registradas de Cygnus electronics y /o sus afiliados en la Argentina y otros países. Cualquier marca de terceros mencionada es propiedad de sus respectivos dueños.

Impreso en Argentina